

Chain Valley Colliery Monthly Website Report – January 2026

Site:	Chain Valley Colliery
Department:	Health Safety and Environment
Report Title:	Monthly Environmental Website Report – January 2026
Report Date:	6 th February 2026
Distribution:	Delta Coal Website

Monthly Website Report

CVC Monthly Environmental Report – January 2025

Table of Contents

Summary	3
Introduction	3
Scope	4
Definitions	4
References	5
Monitoring Results	5
Water – Quality	5
Water – Volume.....	6
Water – Groundwater Discharge.....	7
Air Quality - Depositional Dust	7
Air Quality – PM ₁₀	9
Air Quality – PM _{2.5}	11
Weather Data	12

Monthly Website Report

CVC Monthly Environmental Report – January 2025

Summary

Environmental monitoring results are presented in this report for monitoring undertaken during the period of January 2025.

Introduction

Great Southern Energy Pty Ltd (trading as Delta Coal) operates the Chain Valley Colliery, an underground coal mine at the southern end of Lake Macquarie.

Chain Valley Colliery operates under the following regulatory instruments:

- Section 66(6) of the *Protection of the Environment Operations Act 1997*, to make monitoring data related to an Environment Protection Licence (EPL) publicly available;
- Development Consent SSD-5465 (as modified), issued under the *Environmental Planning and Assessment Act 1979* to provide details of monitoring results and environmental performance;
- An Environment Protection Licence (EPL 1770) issued under the *Protection of the Environment Operations Act 1997*; and
- A Water Access Licence (WAL41508), Aquifer (Sydney Basin – North Coast Groundwater Source) for 4,443 unit shares (megalitres).

The above development consent and licences require various monitoring and reporting requirements to be undertaken by Delta Coal for Chain Valley Colliery.

This report provides environmental monitoring data from Chain Valley Colliery for the month of December 2025.

Details of the Chain Valley Colliery EPL 1770 are provided below.

Chain Valley Colliery Information	
Premises name	Chain Valley Colliery
Address	Construction Road, Chain Valley Bay, NSW, 2259
Licensee	Great Southern Energy Pty Ltd
EPL #	1770
EPL location	EPL 1770 – April 2025

The overall purpose of this monthly report is to keep stakeholders informed of the environmental monitoring results at Chain Valley Colliery and maintain a transparent and accountable reporting system.

Scope

This report presents the results from the various environmental monitoring programs undertaken for Chain Valley Colliery. Results are presented monthly with annual data and averages.

Where applicable, the results of the monitoring programs are compared with the relevant criteria (from the EPL or Development Consent) to assess compliance. Monitoring results presented in this report include:

- Water – quality;
- Water – volume;
- Air Quality – Depositional Dust
- Air Quality – PM₁₀
- Air Quality – PM_{2.5}; and
- Meteorological data.

Definitions

g/m²/month – grams per square metre per month;

kL – kilolitre;

ML – megalitre;

mg/L – milligrams per litre;

TSS – total suspended solids;

µg/L – micrograms per litre; and

µS/cm – microSiemens per centimetre.

Monthly Website Report

CVC Monthly Environmental Report – January 2025

References

ALS Group - Monthly Water Monitoring Results **January 2026**

ALS Group - Dust Deposition Report **January 2026**

Development Consent SSD-5465 (as modified)

Environment Protection Licence (EPL) 1770 (Licence version date: 9 April 2025)

Monitoring Results

Water – Quality

Water quality results for monthly surface water and Spillway event sampling at Chain Valley Colliery, Licensed Discharge Points (LDP1 and LDP27) are presented below.

LDP1 January 2026			
EPL	1770		
Licensee	Great Southern Energy Pty Ltd		
Premises	Chain Valley Colliery		
Date Sampled	13-01-2026		
Date Obtained	20-01-2026		
Sampling Point	LDP 1		
Parameter	Units	Limit	Result
Biochem. Oxygen Demand	mg/L	-	<2
pH	pH	6.5-8.5	7.8
Total Sus. Solids (TSS)	mg/L	50	16
Electrical Conductivity	µS/cm	-	27500

LDP27 January 2026			
EPL	1770		
Licensee	Great Southern Energy Pty Ltd		
Premises	Chain Valley Colliery		
Date Sampled	18/01/2026		
Date Obtained	23/01/2026		
Sampling Point	LDP 27		
Parameter	Units	Limit	Result
pH	pH	6.5-8.5	7.91
Total Sus. Solids (TSS)	mg/L	50	49
Electrical Conductivity	µS/cm	-	7900
Oil & Grease	mg/L	10	<5

Monthly Website Report

CVC Monthly Environmental Report – January 2025

Water – Volume

Monthly water volumes discharged from the site are summarised below. There was no exceedance of volumetric discharge recorded at CVC for the monitoring period.

EPL	1770
Licensee	Great Southern Energy Pty Ltd
Premises	Chain Valley Colliery
Date Sampled	Daily
Date Reported	Refer report date
Discharge volume limit	12,161 kilolitres per day
Sampling Point	1 and 27

Date (24 hour period)	LDP 1 Volume (kL)	LDP 27 Volume (kL)	Total Discharged	Rainfall (mm)
1/01/2026	7052	0	7052	4.6
2/01/2026	3272	0	3272	1
3/01/2026	10078	0	10078	1.4
4/01/2026	5822	0	5822	12.4
5/01/2026	4469	0	4469	0
6/01/2026	9244	0	9244	0
7/01/2026	7537	0	7537	0
8/01/2026	6090	0	6090	0
9/01/2026	4445	0	4445	0
10/01/2026	3961	0	3961	0
11/01/2026	4353	0	4353	37.2
12/01/2026	9339	0	9339	3.8
13/01/2026	3281	0	3281	0.4
14/01/2026	5685	0	5685	6.2
15/01/2026	10349	0	10349	23.6
16/01/2026	4187	0	4187	0
17/01/2026	4962	0	4962	72
18/01/2026	6580	219.52	6799	45
19/01/2026	5329	0	5329	4.8
20/01/2026	9742	0	9742	0.2
21/01/2026	6542	0	6542	0
22/01/2026	9812	0	9812	0
23/01/2026	8376	0	8376	0
24/01/2026	5955	0	5955	0
25/01/2026	5907	0	5907	0
26/01/2026	5770	0	5770	0
27/01/2026	5841	0	5841	0
28/01/2026	7682	0	7682	0
29/01/2026	9132	0	9132	0
30/01/2026	5390	0	5390	0
31/01/2026	5687	0	5687	0

Average	6512	7	6519	7
Minimum	3272	0	3272	0
Maximum	10349	220	10349	72

Monthly Website Report

CVC Monthly Environmental Report – January 2025

Water – Groundwater Discharge

Groundwater discharged from underground workings to the CVC sedimentation ponds within the surface operational area has been detailed below. Chain Valley Colliery operates Water Access License (WAL 41508) permitting the extraction of 4,443 megalitres per water year (financial year calendar) with a roll-over entitlement up to a maximum of 8,886 megalitres.

CVC Groundwater to Surface Totals FY2025-2026		
Date (month)	GW Discharge (ML/Month)	GW Discharge (Cumulative ML YTD)
July 2025	215	215
August 2025	203	417
September 2025	223	640
October 2025	247	887
November 2025	240	1127
December 2025	241	1368
January 2026	216	158

Air Quality - Depositional Dust

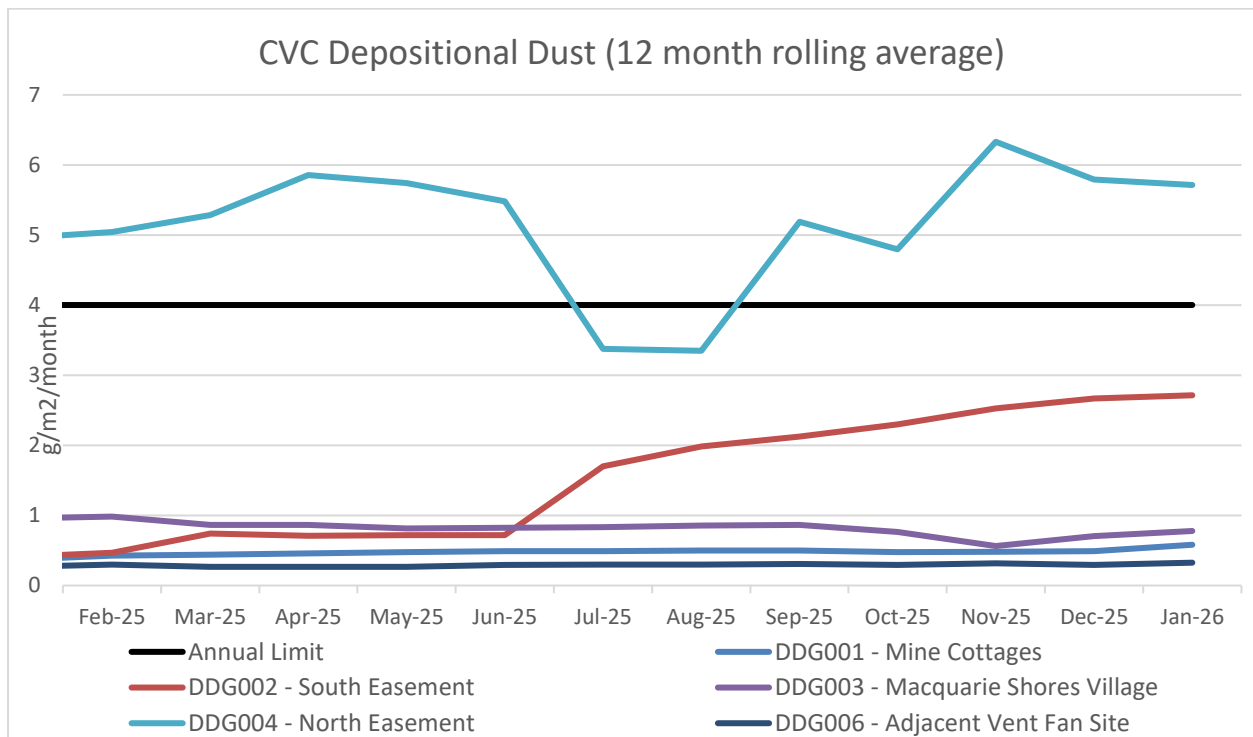
Monthly depositional dust results are shown below. Dust deposition gauges were sampled and analysed in accordance with Development Consent SSD-5465 (as modified), Delta Coal Air Quality and Greenhouse Gas Management Plan, and relevant Australian Standards.

January 2026	
EPL	1770
Limit	4g/m ² /month / Annum 2g/m ² /month increase from previous result
Sampling Date	5/12/2025 – 6/01/2026
Site	Insoluble Matter (g/m ² /month)
DDG001	1.8
DDG002	1.2
DDG003	1.8
DDG004	0.8
DDG006	0.8
Notes: For site locations refer to the Delta Coal Air Quality and Greenhouse Gas Management Plan.	

The 12 month rolling average results for DDG001, DDG002, DDG003 and DDG006 remain within the depositional dust limit of 4g/m²/month (annual average). The 12 month rolling average result for DDG004 was 5.72g/m²/month against the limit of 4g/m²/month.

Monthly Website Report

CVC Monthly Environmental Report – January 2025



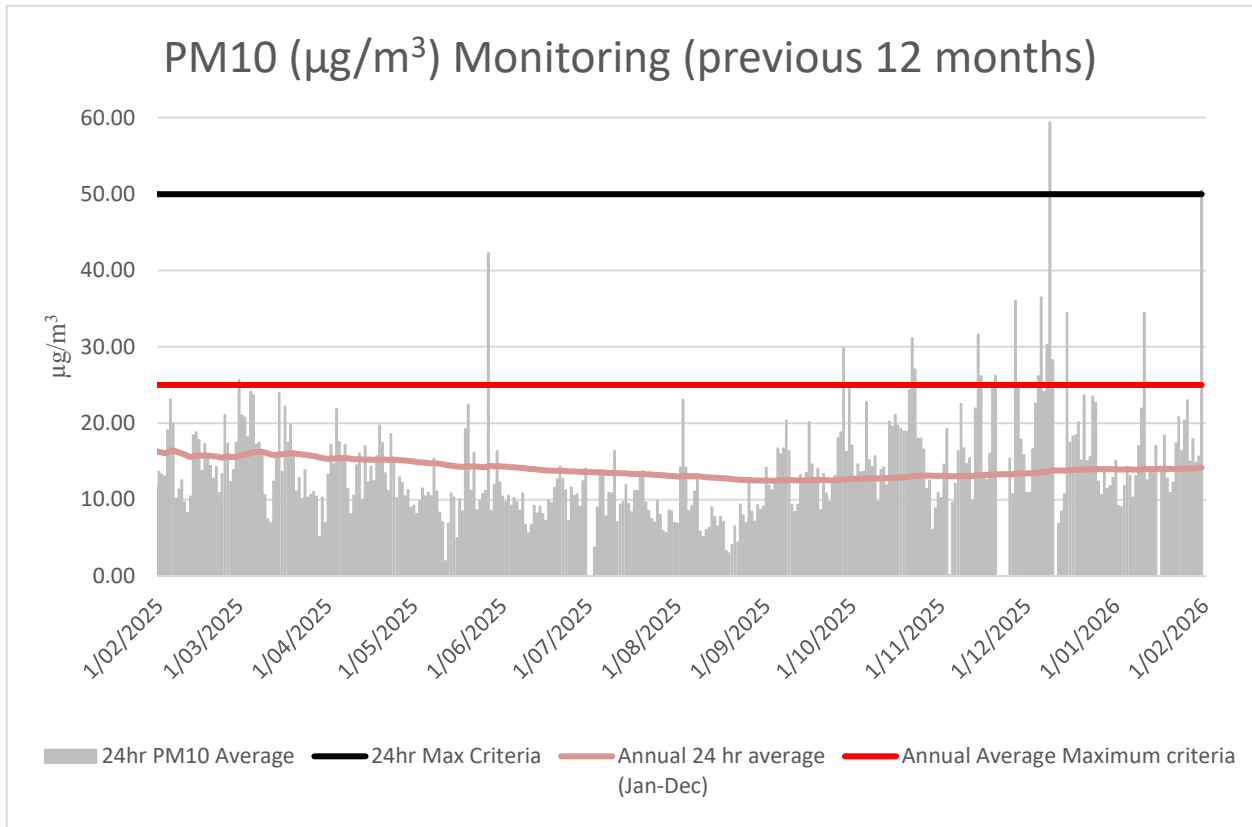
A 12-month rolling average of depositional dust concentrations has been presented above. Dust Gauges DDG001, DDG002, DDG003 and DDG004 are located within a closer proximity to Chain Valley Colliery and DDG006 is positioned in a location representative of the Chain Valley Colliery ventilation fan site at Summerland Point.

Monthly Website Report

CVC Monthly Environmental Report – January 2025

Air Quality – PM₁₀

The 24hr PM₁₀ average from Delta Coal's Tapered Element Oscillating Microbalance (TEOM), located at the Mannering Park Sewage Treatment Plant, is presented below for the previous 12 months.



Annual 24hr PM₁₀ average maximum criteria for January 2026 was below the annual average maximum criteria limit. A summary of data availability for Delta Coal's TEOM is presented below for the reporting period. Delta Coals TEOM had a data availability of 98% for the month of January 2026.

During the period, there was one exceedance of the PM₁₀ 24hr average limit of 50 µg/m³. The 24hr average on 31 January 2026 was 50.5 µg/m³.

Monthly Website Report

CVC Monthly Environmental Report – January 2025

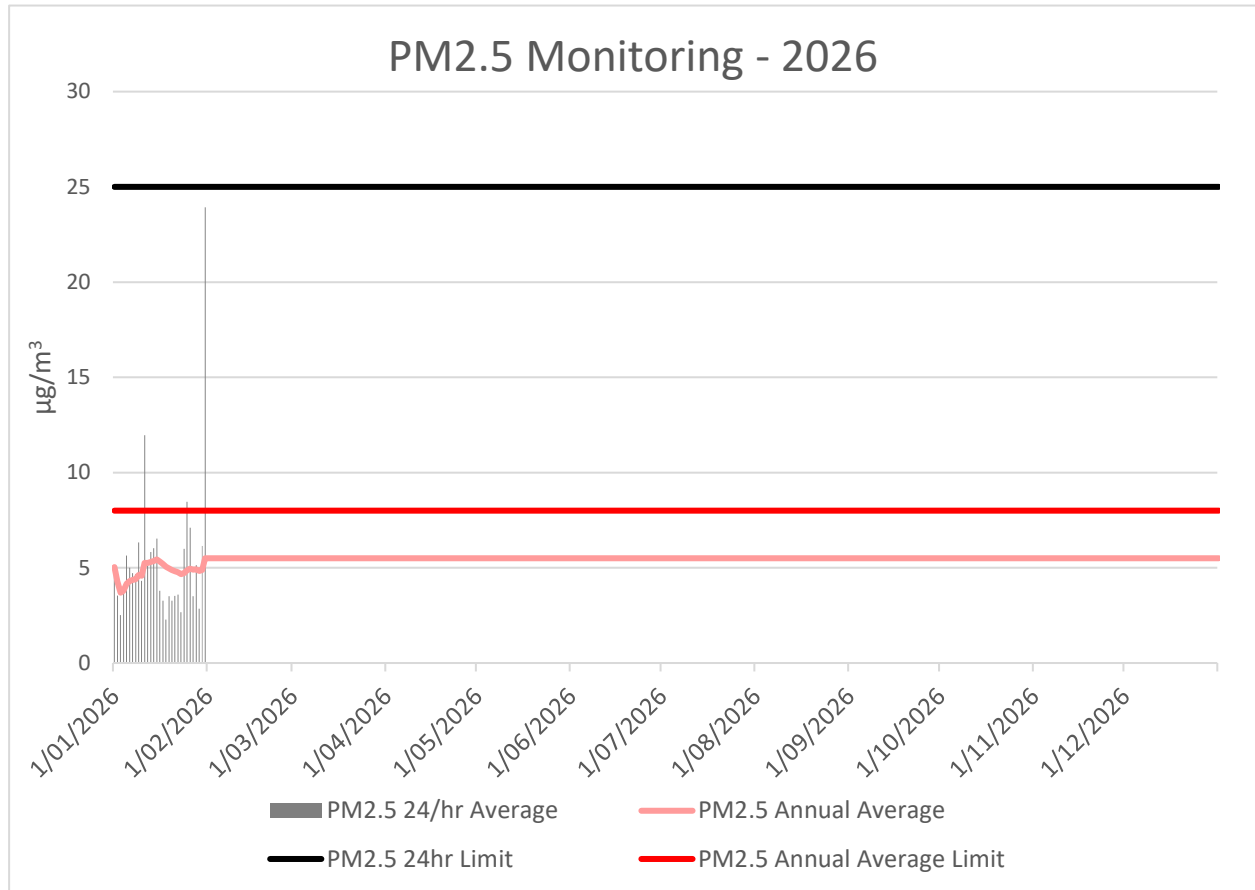
Variable	January	Total	Valid
A/C Temp	98.3%	8928	8776
A1_Scaled	98.3%	8928	8776
Band	98.3%	8928	8776
Bypass Flow	98.3%	8928	8776
Cap Temp	98.3%	8928	8776
Case Temp	98.3%	8928	8776
Config	98.3%	8928	8776
Dew Point	98.3%	8928	8776
Dig-In	98.3%	8928	8776
Dig-Latch	98.3%	8928	8776
ESN	98.3%	8928	8776
Filter Freq	98.3%	8928	8776
Filter Load	98.3%	8928	8776
Humidity	98.3%	8928	8776
MC	98.3%	8928	8776
MC 12Hr	98.3%	8928	8776
MC 1Hr	98.3%	8928	8776
MC 24Hr	98.3%	8928	8776
MC 30min	98.3%	8928	8776
MC 8Hr	98.3%	8928	8776
MC Total	98.3%	8928	8776
Mobile Signal	98.3%	8928	8776
Noise	98.3%	8928	8776
PM10 Flow	98.3%	8928	8776
Pressure	98.3%	8928	8776
Site	0.0%	8928	0
Temperature	98.3%	8928	8776
Tube Temp	98.3%	8928	8776
Vac Pressure	98.3%	8928	8776
Volts	98.3%	8928	8776

Monthly Website Report

CVC Monthly Environmental Report – January 2025

Air Quality – PM_{2.5}

Delta Coal utilises PM_{2.5} data obtained from Delta Electricity owned and operated beta attenuation monitor (BAM). The PM_{2.5} monitor is located on Tingley Road, Wyee.



There were no exceedances of the PM_{2.5} daily average limit in January 2026. The 12-month rolling average PM_{2.5} value on 31 January was 5.5 µg/m³. PM_{2.5} data availability in January was 99.33%. The 2026 year to date PM_{2.5} data availability is 99.3%.

Monthly Website Report

CVC Monthly Environmental Report – January 2025

Weather Data

A summary of weather data recorded by a meteorological monitoring station at the adjacent Mannering Colliery is presented below for the year to date. (EPA ID no. 26).

Monthly Weather Data 2026			
Licensee	Great Southern Energy Pty Ltd		
Location	Mannering Colliery Meteorological station		
Date published	Refer report date		
Date sampled	Daily		
Date obtained	6 February 2026		
Month	Total Rainfall/Month (mm)	Min Temp	Max Temp
Jan-26	224	14.9	40.4

Monthly Website Report

CVC Monthly Environmental Report – January 2025

Variable	January	Total	Valid
Baro (Corrected)	99.9%	2976	2974
10m Temp	99.9%	2976	2974
2m Temp	99.9%	2976	2974
A1_Scaled	99.9%	2976	2974
Assumed Temp	99.9%	2976	2974
Band	99.9%	2976	2974
Barometric	99.9%	2976	2974
Config	99.9%	2976	2974
Daily Evap	99.9%	2976	2974
Daily Rain	99.9%	2976	2974
Delta T	99.9%	2976	2974
Dew Point	99.9%	2976	2974
Dig-In	99.9%	2976	2974
Dig-Latch	99.9%	2976	2974
ESN	99.9%	2976	2974
FDI	99.9%	2976	2974
Heat Index	99.9%	2976	2974
Humidity	99.9%	2976	2974
Mobile Signal	99.9%	2976	2974
Rain	99.9%	2976	2974
Raw Evap	99.9%	2976	2974
S Class	99.9%	2976	2974
Scalar WS	99.9%	2976	2974
Sigma	99.9%	2976	2974
Site	0.0%	2976	0
Solar Radiation	99.9%	2976	2974
Vector WD	99.9%	2976	2974
Vector WS	99.9%	2976	2974
Volts	99.9%	2976	2974
Wind Chill	99.9%	2976	2974
Wind Direction	99.9%	2976	2974
Wind Speed	99.9%	2976	2974
WS Avg	99.9%	2976	2974
WS Gust	99.9%	2976	2974